



MONTHLY MEMBERSHIP PROGRESS REPORT

District 321A2

Results as of: 10/31/2017

GMT: ANIL TULSYAN

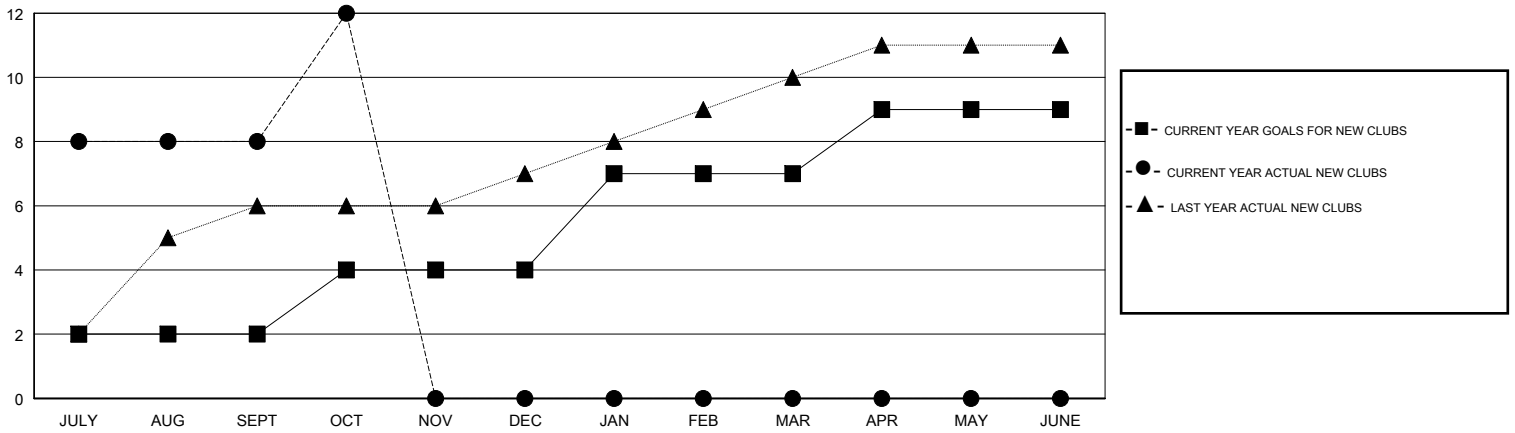
LOCATION INDIA

GMT CA

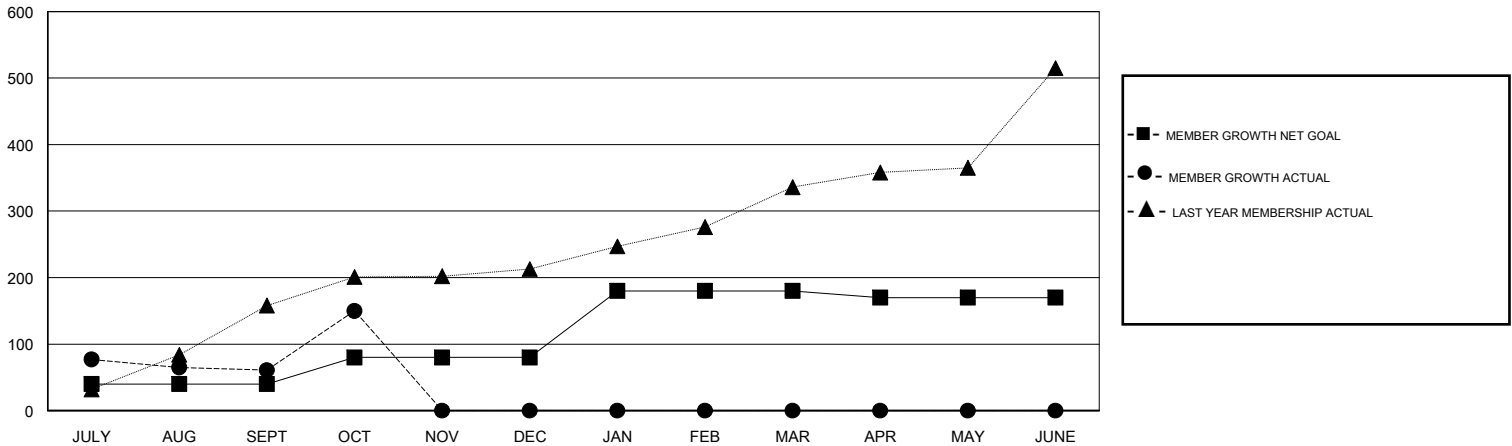
Clubs			
RESULTS FOR 2017-2018			
QUARTER	NEW CLUB GOAL	NEW CLUBS	DROPPED CLUBS
JULY/AUG/SEPT	2	8	0
OCT/NOV/DEC	2	4	1
JAN/FEB/MAR	3	0	0
APR/MAY/JUNE	2	0	0

Members			
RESULTS FOR 2017-2018			
QUARTER	MEMBER GROWTH NET GOAL	MEMBER GROWTH ACTUAL	DROPPED MEMBERS ACTUAL (including transfers)
JULY/AUG/SEPT	40	266	191
OCT/NOV/DEC	40	125	29
JAN/FEB/MAR	100	0	0
APR/MAY/JUNE	-10	0	0

GOALS AND ACTUAL NEW CLUBS CUMULATIVE



GOALS AND ACTUAL MEMBERS CUMULATIVE



DROPPED CLUBS: 1

39 CLUBS OF 113 ADDED 1 OR MORE NEW MEMBERS

GENDER DISTRIBUTION

MALE 2,465 (70.81%)
 FEMALE 1,016 (29.19%)
 Women Percentage Fiscal Year Goal: 35%

DROPPED MEMBERS

DECEASED	3
CLUB CANCELLED	0
OTHER	217
TOTAL	220

[CLICK HERE FOR CUMULATIVE MEMBERSHIP DATA](#)

TOTAL FAMILY UNIT MEMBERS	1,752
FAMILY MEMBERS PAYING HALF DUES	962